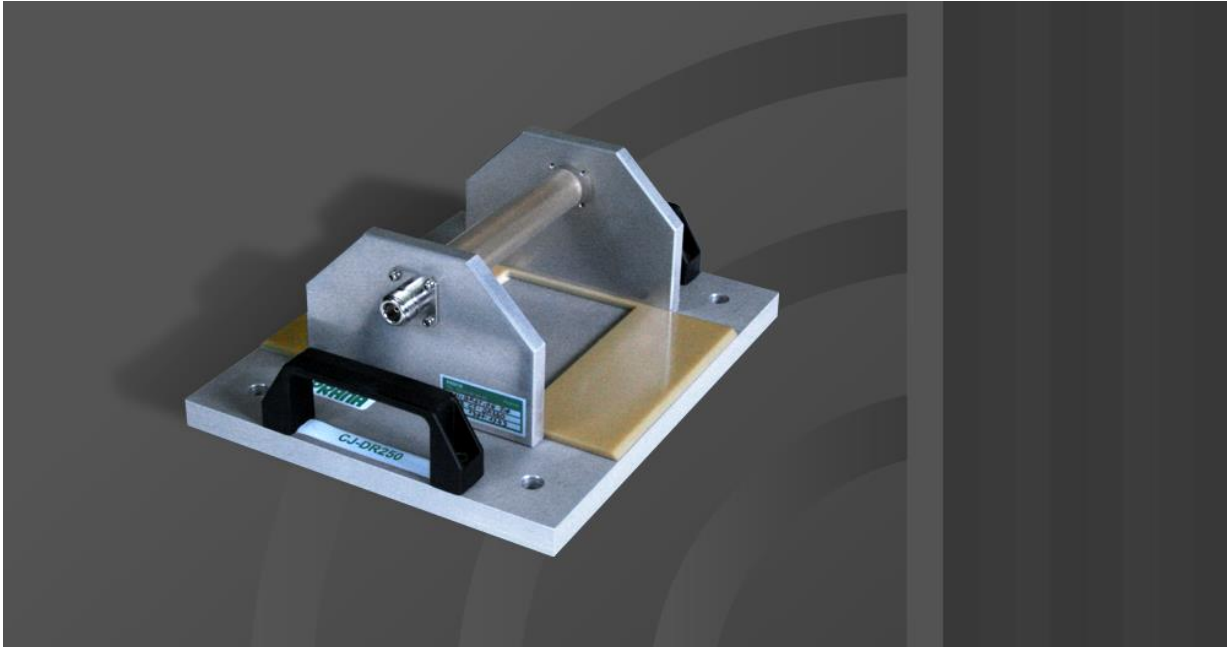


## Cal-JIG for ICC Current coupling clamp

**CJ-DR250** Accessories: 4 kHz - 400MHz / 500 W CW



### **CJ-DR250**

Calibration JIG for IP-DR250  
N connectors

### **Maintenance**

Rapid diagnostic  
Minimal downtime  
Contract for preventive and corrective maintenance available

### **Applications**

Could be used for EMC standards :  
DO 160 D  
Mil STD 461  
Automotive standards: PSA, Renault, Ford, Daimler Chrysler...  
ISO 11452-4  
SAE J1113-4  
...

### **Accessories**

CJ-DR250 => 500 W CW  
IP-DR250 => 500 W CW

### **Specifications**

Frequency Range	0.01 - 400 MHz
Window diameter	43.8 mm
RF input connector Type	"N" Female
Maximum input Power	500 W